

								Y2022											
No.	Package No.	DESCRIPTION	EQUIPMENT	CLASS	LAST PM DATE	FREQUENCY	DUE DATE	JAN	FEB	MAR	APR	MAY	JUN	JUL	AUG	SEP	OCT	NOV	DEC
1	MF100	Centrifugal Pump	51P-101A	B	8-12-2021	6M	1 MONTH					ME001						ME001	
2			51P-101R	B	14/2/2022	6M	1 MONTH		ME001						ME001				
3			51P-102A	B	11/11/2021	6M	1 MONTH					ME001						ME001	
4			51P-102R	B	14/2/2022	6M	1 MONTH		ME001						ME001				
5			51P-103A	B	8-06-2021	6M	1 MONTH					ME001						ME001	
6			51P-103R	B	14/2/2022	6M	1 MONTH		ME001						ME001				
7			52P-101A	B	13/6/2022	6M	1 MONTH			ME001			ME001			ME001			ME001
8			52P-101B	B	15/4/2022	6M	1 MONTH	ME001			ME001			ME001			ME001		
9			52P-101R	B	22/2/2022	6M	1 MONTH		ME001			ME001			ME001			ME001	
10			53P-101A	C	2/4/2022	6M	1 MONTH						ME001						ME001
11			53P-101R	C		6M	1 MONTH					ME001						ME001	
12			61P-104A	C	13/6/2022	6M	1 MONTH						ME001						ME001
13			61P-104R	C	31/5/2022	6M	1 MONTH					ME001						ME001	
14	MF190	Self Priming Centrifugal Pump	61P-101A	B	21/5/2022	6M	1 MONTH					ME002						ME002	
15			61P-101R	B	14/2/2022	6M	1 MONTH		ME002						ME002				
16			61P-106A	B	21/5/2022	6M	1 MONTH					ME002						ME002	
17			61P-106R	B	14/2/2022	6M	1 MONTH		ME002						ME002				
18			61P-107	B	14/6/2022	6M	1 MONTH						ME002						ME002
19			61P-108	B	14/6/2022	6M	1 MONTH						ME002						ME002
20			60P-103	B	14/6/2022	6M	1 MONTH						ME002						ME002
21			60P-106	B	14/6/2022	6M	1 MONTH						ME002						ME002
22	MF 520	Canned Pump	10P-401	A	22/1/2022	6M	1 MONTH	ME003						ME003					
23			10P-402	A	22/1/2022	6M	1 MONTH	ME003						ME003					
24			20P-402	A	9/2/2022	6M	1 MONTH		ME003						ME003				
25			21P-204B	B	9/2/2022	6M	1 MONTH			ME003					ME003				
26			21P-303	A	9/2/2022	6M	1 MONTH		ME003						ME003				
27			40P-101	A	22/1/2022	6M	1 MONTH	ME003						ME003					
28			40P-104	A	22/1/2022	6M	1 MONTH	ME003						ME003					
29			40P-105	A	22/1/2022	6M	1 MONTH	ME003						ME003					
30			40P-106A	B	22/1/2022	6M	1 MONTH	ME003						ME003					
31			40P-106B	B	22/1/2022	6M	1 MONTH	ME003						ME003					
32			40P-106R	B	22/1/2022	6M	1 MONTH	ME003						ME003					
33			40P-107A	B	22/1/2022	6M	1 MONTH	ME003						ME003					
34			40P-107R	B	22/1/2022	6M	1 MONTH	ME003						ME003					
35			40P-108	B	22/1/2022	6M	1 MONTH	ME003						ME003					
36			40P-131A	A	8/2/2022	6M	1 MONTH		ME003						ME003				
37			40P-132A	A	8/2/2022	6M	1 MONTH		ME003						ME003				
38			40P-138	A	8/2/2022	6M	1 MONTH		ME003						ME003				
39			40P-139	B	8/2/2022	6M	1 MONTH		ME003						ME003				
40			60P-111	B	8/2/2022	6M	1 MONTH		ME003						ME003				
41	MF 420	Air Operated Diaphragm Pump	21P-106A	A	14/2/2022	6M	1 MONTH		ME004						ME004				
42			31P-104	A	14/2/2022	6M	1 MONTH		ME004						ME004				
43			40P-125	B	24/1/2022	6M	1 MONTH	ME004						ME004					
44			40P-128	B	24/1/2022	6M	1 MONTH	ME004						ME004					
45			40P-129	B	24/1/2022	6M	1 MONTH	ME004						ME004					
46			40P-143	B	14/2/2022	6M	1 MONTH		ME004						ME004				
47			40P-144	B	14/2/2022	6M	1 MONTH		ME004						ME004				
48			40P-146	B	ถอดออกไปแล้ว	6M	1 MONTH		ME004						ME004				
49			40P-147	B	14/2/2022	6M	1 MONTH		ME004						ME004				
50	MG 430	Air Compressor	54X-101A	B	7/4/2022	3M	1 MONTH				ME005/ME098				ME005/ME098			ME005/ME098	
51			54X-101B	B	7/4/2022	3M	1 MONTH				ME005/ME098				ME005/ME098			ME005/ME098	
52			54X-101R	B	7/4/2022	3M	1 MONTH				ME005/ME098				ME005/ME098			ME005/ME098	
53			11P-101	A	4/7/2022	3M/6M	1 MONTH	ME006/ME007			ME006			ME006/ME007			ME006		
54			11P-102	B	4/7/2022	3M/6M	1 MONTH	ME006/ME007			ME006			ME006/ME007			ME006		
55			11P-103	A	4/7/2022	3M/6M	1 MONTH	ME006/ME007			ME006			ME006/ME007			ME006		
56			11P-104A	A	4/7/2022	3M/6M	1 MONTH	ME006/ME007			ME006			ME006/ME007			ME006		
57			11P-104B	A	4/7/2022	3M/6M	1 MONTH	ME006/ME007			ME006			ME006/ME007			ME006		
58			11P-105A	A	5/7/2022	3M/6M	1 MONTH	ME006/ME007			ME006			ME006/ME007			ME006		

59	11 PPG Process Gear Pump	11P-105B	A	5/7/2022	3M/6M	1 MONTH	ME006/ME007		ME006	ME006/ME007	ME006	
60		11P-106A	A	5/7/2022	3M/6M	1 MONTH	ME006/ME007		ME006	ME006/ME007	ME006	
61		11P-106B	A	5/7/2022	3M/6M	1 MONTH	ME006/ME007		ME006	ME006/ME007	ME006	
62		11P-107A	A	5/7/2022	3M/6M	1 MONTH	ME006/ME007		ME006	ME006/ME007	ME006	
63		11P-107B	A	5/7/2022	3M/6M	1 MONTH	ME006/ME007		ME006	ME006/ME007	ME006	
64		11P-109	B	6/7/2022	3M/6M	1 MONTH	ME006/ME007		ME006	ME006/ME007	ME006	
65		11P-201A	A	6/7/2022	3M/6M	1 MONTH	ME006/ME007		ME006	ME006/ME007	ME006	
66		11P-201B	A	6/7/2022	3M/6M	1 MONTH	ME006/ME007		ME006	ME006/ME007	ME006	
67		11P-202A	A	6/7/2022	3M/6M	1 MONTH	ME006/ME007		ME006	ME006/ME007	ME006	
68		11P-202B	A	6/7/2022	3M/6M	1 MONTH	ME006/ME007		ME006	ME006/ME007	ME006	
69	12 PPG Process Gear Pump	11P-203A	A	6/7/2022	3M/6M	1 MONTH	ME006/ME007		ME006	ME006/ME007	ME006	
70		11P-203B	A	6/7/2022	3M/6M	1 MONTH	ME006/ME007		ME006	ME006/ME007	ME006	
71		12P-101	A	1/7/2022	3M/6M	1 MONTH	ME006/ME007		ME006	ME006/ME007	ME006	
72		12P-103	A	1/7/2022	3M/6M	1 MONTH	ME006/ME007		ME006	ME006/ME007	ME006	
73		12P-104	A	1/7/2022	3M/6M	1 MONTH	ME006/ME007		ME006	ME006/ME007	ME006	
74		12P-105	A	1/7/2022	3M/6M	1 MONTH	ME006/ME007		ME006	ME006/ME007	ME006	
75		12P-106	A	1/7/2022	3M/6M	1 MONTH	ME006/ME007		ME006	ME006/ME007	ME006	
76		12P-107	A	1/7/2022	3M/6M	1 MONTH	ME006/ME007		ME006	ME006/ME007	ME006	
77		12P-109	A	1/7/2022	3M/6M	1 MONTH	ME006/ME007		ME006	ME006/ME007	ME006	
78		12P-201	A	1/7/2022	3M/6M	1 MONTH	ME006/ME007		ME006	ME006/ME007	ME006	
79	13 PPG Process Gear Pump	12P-202	A	1/7/2022	3M/6M	1 MONTH	ME006/ME007		ME006	ME006/ME007	ME006	
80		12P-203	A	1/7/2022	3M/6M	1 MONTH	ME006/ME007		ME006	ME006/ME007	ME006	
81	POP Process Gear Pump (General)	13P-101	A	4/7/2022	3M/6M	1 MONTH	ME006/ME007		ME006	ME006/ME007	ME006	
82		21P-101A	A	1/6/2022	3M/6M	1 MONTH		ME006	ME006/ME007	ME006	ME006/ME007	
83		21P-101B	A	1/6/2022	3M/6M	1 MONTH		ME006	ME006/ME007	ME006	ME006/ME007	
84		21P-103A	A	1/6/2022	3M/6M	1 MONTH		ME006	ME006/ME007	ME006	ME006/ME007	
85		21P-103B	A	1/6/2022	3M/6M	1 MONTH		ME006	ME006/ME007	ME006	ME006/ME007	
86		21P-104	A	9/6/2022	3M/6M	1 MONTH		ME006	ME006/ME007	ME006	ME006/ME007	
87		21P-106B	A	1/6/2022	3M/6M	1 MONTH		ME006	ME006/ME007	ME006	ME006/ME007	
88		21P-108	A	1/6/2022	3M/6M	1 MONTH		ME006	ME006/ME007	ME006	ME006/ME007	
89		21P-109A	A	1/6/2022	3M/6M	1 MONTH		ME006	ME006/ME007	ME006	ME006/ME007	
90		21P-109B	A	9/6/2022	3M/6M	1 MONTH		ME006	ME006/ME007	ME006	ME006/ME007	
91		21P-110	A	9/6/2022	3M/6M	1 MONTH		ME006	ME006/ME007	ME006	ME006/ME007	
92		21P-111A	B	9/6/2022	3M/6M	1 MONTH		ME006	ME006/ME007	ME006	ME006/ME007	
93		21P-111B	B	9/6/2022	3M/6M	1 MONTH		ME006	ME006/ME007	ME006	ME006/ME007	
94		21P-111C	B	9/6/2022	3M/6M	1 MONTH		ME006	ME006/ME007	ME006	ME006/ME007	
95		21P-112	A	9/6/2022	3M/6M	1 MONTH		ME006	ME006/ME007	ME006	ME006/ME007	
96	POP Process Gear Pump (Small)	21P-113A	A	9/6/2022	3M/6M	1 MONTH		ME006	ME006/ME007	ME006	ME006/ME007	
97		21P-113B	B	9/6/2022	3M/6M	1 MONTH		ME006	ME006/ME007	ME006	ME006/ME007	
98		21P-105A	A	9/6/2022	3M/6M	1 MONTH		ME006	ME006/ME009	ME006	ME006/ME009	
99		21P-105B	A	9/6/2022	3M/6M	1 MONTH		ME006	ME006/ME009	ME006	ME006/ME009	
100		21P-107A	A	9/6/2022	3M/6M	1 MONTH		ME006	ME006/ME009	ME006	ME006/ME009	
101		21P-107B	A	9/6/2022	3M/6M	1 MONTH		ME006	ME006/ME009	ME006	ME006/ME009	
102		21P-202A2	A	21/6/2022	6M	1 MONTH			ME009			ME009
103		21P-202A3	A	21/6/2022	6M	1 MONTH			ME009			ME009
104		21P-202B2	A	5/6/2022	6M	1 MONTH			ME009			ME009
105		21P-202B3	A	5/6/2022	6M	1 MONTH			ME009			ME009
106		21P-202C2	A	21/6/2022	6M	1 MONTH			ME009			ME009
107		21P-202C3	A	21/6/2022	6M	1 MONTH			ME009			ME009
108		21P-203A2	A	21/6/2022	6M	1 MONTH			ME009			ME009
109		21P-203A3	A	21/6/2022	6M	1 MONTH			ME009			ME009
110	POP Process Gear Pump/ belt	21P-203B2	A	5/6/2022	6M	1 MONTH			ME009			ME009
111		21P-203B3	A	5/6/2022	6M	1 MONTH			ME009			ME009
112		21P-203C2	A	21/6/2022	6M	1 MONTH			ME009			ME009
113		21P-203C3	A	21/6/2022	6M	1 MONTH			ME009			ME009
114		21P-202A	A	11-06-22	3M/6M	1 MONTH		ME006	ME006/ME008	ME006	ME006/ME008	
115		21P-202B	A	11/6/2022	3M/6M	1 MONTH		ME006	ME006/ME008	ME006	ME006/ME008	
116		21P-202C	A	11/6/2022	3M/6M	1 MONTH		ME006	ME006/ME008	ME006	ME006/ME008	
117		21P-203A	A	11/6/2022	3M/6M	1 MONTH		ME006	ME006/ME008	ME006	ME006/ME008	
118		21P-203B	A	11/6/2022	3M/6M	1 MONTH		ME006	ME006/ME008	ME006	ME006/ME008	

MF 310

179			11VP-302A	A	10/5/2022	4M	1 MONTH	ME014					ME014				ME014			
180			11VP-302B	A	12/5/2022	4M	1 MONTH	ME014					ME014				ME014			
181			12VP-302	A	11/5/2022	4M	1 MONTH	ME014					ME014				ME014			
182			20VP-402	B	11-03-2022	4M	1 MONTH				ME014					ME014			ME014	
183			21VP-401	A	11-03-2022	4M	1 MONTH				ME014					ME014			ME014	
184	MH 740	Liquid Ring Vacuum Pump	21VP-402	A	7/6/2022	3M	1 MONTH				ME017			ME017			ME017			ME017
185			21VP-403	A	7/6/2022	3M	1 MONTH				ME017			ME017			ME017			ME017
186			21VP-404	A	7/6/2022	3M	1 MONTH				ME017			ME017			ME017			ME017
187	MH 740	Centrifugal Pump	21P-404	A	9/6/2022	6M	1 MONTH							ME001						ME001
188			21P-305	A	9/6/2022	6M	1 MONTH							ME001						ME001
189			21P-407	A	9/6/2022	6M	1 MONTH							ME001						ME001
190			21P-102A	A	6/4/2022	6M	1 MONTH	ME020								ME020				
191			21P-102B	A	6/4/2022	6M	1 MONTH	ME020								ME020				
192			21P-204A	A	6/4/2022	6M	1 MONTH	ME020								ME020				
193			40P-131B	A	28/4/2022	6M	1 MONTH	ME020								ME020				
194			40P-131C	A	6/4/2022	6M	1 MONTH	ME020								ME020				
195			40P-132B	A	28/4/2022	6M	1 MONTH	ME020								ME020				
196			40P-132C	A	28/4/2022	6M	1 MONTH	ME020								ME020				
197			40P-145	A	12/4/2022	6M	1 MONTH	ME020								ME020				
198	MD810	Thin Film Evaporator	21HE-402	A	8/4/2022	6M/1Y	1 MONTH	ME022			ME022							ME022		
199			21HE-409	A	8/4/2022	6M	1 MONTH	ME022			ME022							ME022		
200	MK630	Automated Warehouse	80X-101	A	vender	3M/1Y	1 MONTH	ME027			ME027					ME027			ME027/ME028	
201			52X-101A	B	24/2/2022	6M	1 MONTH				ME029/ME031						ME029/ME031			
202	MD610	Cooling Tower	52X-101B	B	25/2/2022	6M	1 MONTH				ME029/ME031							ME029/ME031		
203			52X-101C	B	14/3/2022	6M	1 MONTH				ME029/ME031								ME029/ME031	
204	MF600	Fire Water Pump	58P-101	S	21/3/2022	6M	1 MONTH				ME032							ME032		
205			10H-101	A	17/3/2022	6M/1Y	1 MONTH				ME033/ME034							ME033		
206			10H-102	A	17/3/2022	6M/1Y	1 MONTH				ME033/ME034							ME033		
207			10H-103	A	17/3/2022	6M/1Y	1 MONTH				ME033/ME034							ME033		
208			11H-501	C	15/3/2022	6M/1Y	1 MONTH				ME033/ME034							ME033		
209			11H-502	C	15/3/2022	6M/1Y	1 MONTH				ME033/ME034							ME033		
210			11H-503	B	17/3/2022	6M/1Y	1 MONTH				ME033/ME034							ME033		
211			11H-504	B	15/3/2022	6M/1Y	1 MONTH				ME033/ME034							ME033		
212			12H-501	C	15/3/2022	6M/1Y	1 MONTH				ME033/ME034							ME033		
213			12H-502	B	16/3/2022	6M/1Y	1 MONTH				ME033/ME034							ME033		
214			54H-101	A	16/3/2022	6M/1Y	1 MONTH				ME033/ME034							ME033		
215			54H-102	A	16/3/2022	6M/1Y	1 MONTH				ME033/ME034							ME033		
216			54H-103	A	16/3/2022	6M/1Y	1 MONTH				ME033/ME034							ME033		
217	MK210	Elevator	10X-111	B	2/3/2022	1M/1Y	1 MONTH	ME088	ME088	E088/ME0	ME088	ME088	ME088	ME088	ME088	ME088	ME088	ME088	ME088	ME088
218			20X-111	B	2/3/2022	1M/1Y	1 MONTH	ME088	ME088	E088/ME0	ME088	ME088	ME088	ME088	ME088	ME088	ME088	ME088	ME088	ME088
219			52P-111A	C	18/2/2022	6M	1 MONTH				ME036						ME036			
220			52P-111R	C	18/2/2022	6M	1 MONTH				ME036								ME036	
221			52P-112A	C	18/2/2022	6M	1 MONTH				ME036						ME036			
222			52P-112R	C	18/2/2022	6M	1 MONTH				ME036								ME036	
223			52P-113A	C	18/2/2022	6M	1 MONTH				ME036						ME036			
224			52P-113R	C	18/2/2022	6M	1 MONTH				ME036								ME036	
225			52P-114A	C	18/2/2022	6M	1 MONTH				ME036						ME036			
226			52P-114R	C	18/2/2022	6M	1 MONTH				ME036								ME036	
227			52P-115A	C	18/2/2022	6M	1 MONTH				ME036						ME036			
228			52P-115R	C	18/2/2022	6M	1 MONTH				ME036								ME036	
229			61P-111A	C	18/2/2022	6M	1 MONTH				ME036						ME036			
230			61P-111R	C	18/2/2022	6M	1 MONTH				ME036								ME036	
231			61P-112A	C	18/2/2022	6M	1 MONTH				ME036						ME036			
232			61P-112R	C	18/2/2022	6M	1 MONTH				ME036								ME036	
233			63C-112A	B	21/3/2022	1M	1 MONTH	ME037	ME037	ME037					ME037			ME037		
234	ME310	TO Blower	63C-112R	B	8/4/2022	1M	1 MONTH				ME037			ME037				ME037		ME037
235			63C-111A	B	8/4/2022	6M	1 MONTH				ME038							ME038		
236			63C-111R	B	27/1/2022	6M	1 MONTH	ME038								ME038				
237			10C-401	A	8/6/2022	1M	1 MONTH	ME039			ME039			ME039			ME039			ME039

238	MK 400	PCS Blower	11C-302A	A	8/6/2022	1M	1 MONTH	ME039		ME039		ME039		ME039		ME039
239			11C-302B	A	8/6/2022	1M	1 MONTH	ME039		ME039		ME039		ME039		ME039
240			12C-302	A	8/6/2022	1M	1 MONTH	ME039		ME039		ME039		ME039		ME039
241			10C-402	A	8/6/2022	1M	1 MONTH	ME039		ME039		ME039		ME039		ME039
242			12C-301A	A	8/6/2022	1M	1 MONTH	ME039		ME039		ME039		ME039		ME039
243			12C-301B	A	8/6/2022	1M	1 MONTH	ME039		ME039		ME039		ME039		ME039
244	MK 400	Rotary Valve	13C-301	A	13/6/2022	2M/6M	1 MONTH	ME040/ME41		ME040		ME040	ME040/ME41		ME040	ME040
245			10Z-101	A	24/1/2022	3M/1Y	1 MONTH	ME042/ME043					ME042/ME043			
246			10Z-401	A	24/1/2022	3M/1Y	1 MONTH	ME042/ME043					ME042/ME043			
247			10Z-201A	B	22/2/2022	3M/1Y	1 MONTH	ME042/ME043					ME042/ME043			
248			10Z-201B	B	22/2/2022	3M/1Y	1 MONTH	ME042/ME043					ME042/ME043			
249			11Z-202A	A	24/1/2022	3M/1Y	1 MONTH	ME042/ME043					ME042/ME043			
250			11Z-202B	A	24/1/2022	3M/1Y	1 MONTH	ME042/ME043					ME042/ME043			
251			12Z-202	A	24/1/2022	3M/1Y	1 MONTH	ME042/ME043					ME042/ME043			
252			12Z-201A	A	24/1/2022	3M/1Y	1 MONTH	ME042/ME043					ME042/ME043			
253			12Z-201B	A	24/1/2022	3M/1Y	1 MONTH	ME042/ME043					ME042/ME043			
254			10Z-102	A	24/1/2022	3M/1Y	1 MONTH	ME042/ME043					ME042/ME043			
256			10Z-402	A	24/1/2022	3M/1Y	1 MONTH	ME042/ME043					ME042/ME043			
257			10Z-202A	B	24/1/2022	3M/1Y	1 MONTH	ME042/ME043					ME042/ME043			
258			10Z-202B	B	24/1/2022	3M/1Y	1 MONTH	ME042/ME043					ME042/ME043			
259			10Z-103	A	24/1/2022	3M/1Y	1 MONTH	ME042/ME043					ME042/ME043			
260			13Z-201	A	24/1/2022	3M/1Y	1 MONTH	ME042/ME043					ME042/ME043			
261	MH410	Compressor	10C-411	A	vender	2M/4M/5Y	1 MONTH	ME044		ME044/ME045			ME044/ME045			ME044/ME045
262			40C-111	A	vender	2M/4M/5Y	1 MONTH	ME044		ME044/ME045			ME044/ME045			ME044/ME045
263	MH410	Lube Oil Gear Pump	10P-411A	B	22/1/2022	6M	1 MONTH	ME009					ME009			
264			10P-411B	B	22/1/2022	6M	1 MONTH	ME009					ME009			
265			40P-111A	B	22/1/2022	6M	1 MONTH	ME009					ME009			
266			40P-111B	B	22/1/2022	6M	1 MONTH	ME009					ME009			
267	MK590	Filling Machine	11Z-101	A	20/4/2022	3M/1Y	1 MONTH	ME047		ME047			ME047/ME048		ME047	
268			12Z-101	A	4/7/2022	3M/1Y	1 MONTH	ME047		ME047			ME047/ME048		ME047	
269			13Z-101	A	4/7/2022	3M/1Y	1 MONTH	ME047		ME047			ME047/ME048		ME047	
270			21Z-101	A	21/4/2022	3M/1Y	1 MONTH	ME047		ME047			ME047/ME048		ME047	
271			31Z-101	A	21/4/2022	3M/1Y	1 MONTH	ME047		ME047			ME047/ME048		ME047	
272	MH210	Air Dryer Blower	54C-111	A	23/1/2022	6M	1 MONTH	ME049		ME049			ME049			ME049
273	MK610	Loading Arm	40X-131	A	8/3/2022	6M	1 MONTH			ME050					ME050	
274			40X-132	A	8/3/2022	6M	1 MONTH			ME050					ME050	
275			40X-133	A	8/3/2022	6M	1 MONTH			ME050					ME050	
276			40X-135A	A	8/3/2022	6M	1 MONTH			ME050					ME050	
277			40X-135B	A	8/3/2022	6M	1 MONTH			ME050					ME050	
278			40X-135C	A	8/3/2022	6M	1 MONTH			ME050					ME050	
279	MJ520	Schneider Filter	11F-203A	A	6/11/2021	6M/5Y	1 MONTH			ME051					ME051	
280			11F-203B	A	7/11/2021	6M/5Y	1 MONTH			ME051					ME051	
281			12F-203	A	20/4/2022	6M/5Y	1 MONTH			ME051					ME051	
282	MJ350	Scrubber Pump	40P-124G	B	17/8/2021	6M	1 MONTH		ME053				ME053			
283			40P-124A	B	15/6/2022	6M	1 MONTH	ME053/ME09	ME097	ME097	ME097	ME097	ME097	ME097	ME097	ME097
284			40P-124R	B	10/4/2022	6M	1 MONTH	ME053/ME09	ME097	ME097	ME097	ME097	ME097	ME097	ME097	ME097
285			40P-124D	B	15/6/2022	6M	1 MONTH	ME053/ME09	ME097	ME097	ME097	ME097	ME097	ME097	ME097	ME097
286			40P-124F	A	15/6/2022	6M	1 MONTH	ME053/ME09	ME097	ME097	ME097	ME097	ME097	ME097	ME097	ME097
287			40P-124C	B	17/8/2021	6M	1 MONTH		ME054				ME054			
288	PPG Reactor Agitator (Seal Pot)		11RA-201A	B	16/6/2022	3M/3M/1Y/3Y/5Y	1 MONTH		ME055/ME056		ME055/ME056		ME055/ME056		ME058	E055/ME05
289			11RA-201B	B	16/6/2022	3M/3M/1Y/3Y/5Y	1 MONTH		ME055/ME056		ME055/ME056		ME055/ME056		ME058	E055/ME05
290			11RA-201C	B	16/6/2022	3M/3M/1Y/3Y/5Y	1 MONTH		ME055/ME056		ME055/ME056		ME055/ME056		ME058	E055/ME05
291			11RA-201D	B	16/6/2022	3M/3M/1Y/3Y/5Y	1 MONTH		ME055/ME056		ME055/ME056		ME055/ME056		ME058	E055/ME05
292			11RA-201E	B	16/6/2022	3M/3M/1Y/3Y/5Y	1 MONTH		ME055/ME056		ME055/ME056		ME055/ME056		ME058	E055/ME05
293			12RA-201A	A	16/6/2022	3M/3M/1Y/3Y/5Y	1 MONTH		ME055/ME056		ME055/ME056		ME055/ME056		ME058	E055/ME05
294			12RA-201B	A	16/6/2022	3M/3M/1Y/3Y/5Y	1 MONTH		ME055/ME056		ME055/ME056		ME055/ME056		ME058	E055/ME05
295			13RA-201	A	16/6/2022	3M/3M/1Y/3Y/5Y	1 MONTH		ME055/ME056		ME055/ME056		ME055/ME056		ME058	E055/ME05
296			21RA-201A	A	19/2/2022	3M/3M/1Y/3Y/5Y	1 MONTH		ME064/ME065		ME064/ME065		ME064/ME065/ME066		ME064/ME065	
297			21RA-201B	A	19/2/2022	3M/3M/1Y/3Y/5Y	1 MONTH		ME064/ME065		ME064/ME065		ME064/ME065/ME066		ME064/ME065	

[illegible]



บริษัท จีซี โพลีออลส์ จำกัด

F-(COO-COO-MN)-018: Multi Stages - PCS

Blower Preventive Maintenance Report

MULTI STAGES – PCS BLOWER PREVENTIVE MAINTENANCE REPORT

Maintenance Order (MO)

301863237

Working Date

08/06/22

Work Instruction No.

W-(GCP-PY-MN)-031

Area

☒ PPG ☐ POP ☐ PM ☐ OSBL**EQUIPMENT SPECIFICATIONS**

Equipment No.

110-302B

Model

STF-5.5HG-IC

Manufacturer

SAMWON E&B

Lubrication

Grease NLGI 2

Transmission Type

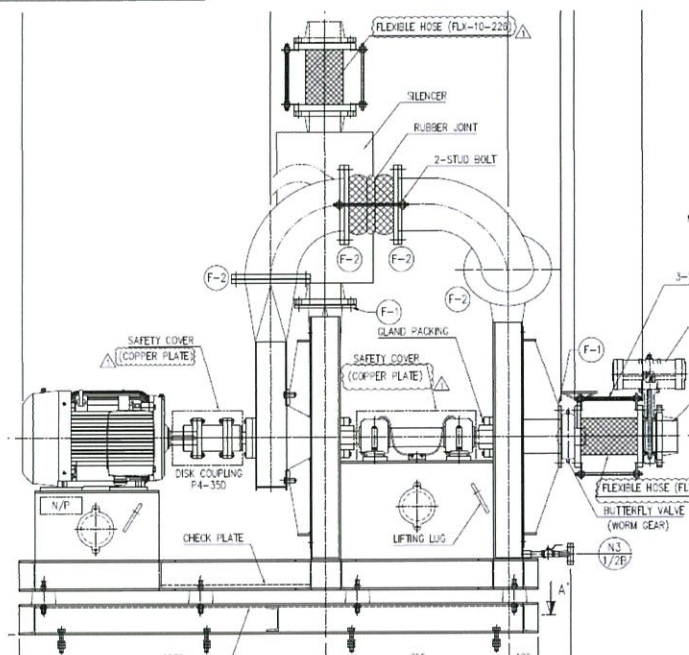
Direct

Seal Type

Seal less

Coupling Type

Flexible Disc

BLOWER GENERAL ARRANGEMENT**INSPECTION LISTS**

Air Leak Check

☒ OK☐ Not OK☐ N/A

Blower Re-grease

☒ OK☐ Not OK☐ N/A

Coupling Check

☒ OK☐ Not OK☐ N/A

Expansion Joint Check

☒ OK☐ Not OK☐ N/A

Bolt & Nut Tightness Check

☒ OK☐ Not OK☐ N/A

Rust, Corrosion Check

☒ OK☐ Not OK☐ N/A

House Keeping

☒ OK☐ Not OK☐ N/A**INSPECTION RESULT**☒ ACCEPTED☐ ACCEPTED W. NOTE☐ NOT ACCEPTED W. NOTE**NOTE**

Reported By

msdhpv n.

Date

08/06/22

Approved By

Date

08/06/22